



Caledonian

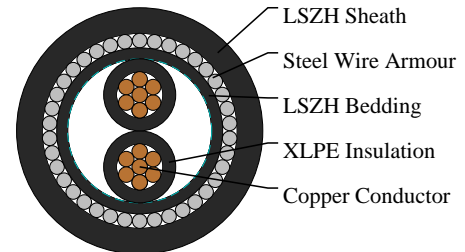
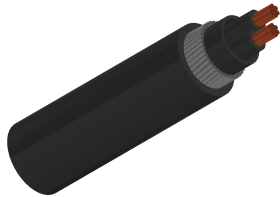
Railway Cables

www.caledonian-cables.com

marketing@caledonian-cables.com

0.6/1KV Limited Fire Hazard/Fire Survival Multicore Armoured Cables to EME-SP-14-027

RF14027-RZ1MZ1-U(AS)-0.6/1KV-2G4S



APPLICATIONS

The cables are designed for station range installation typically in public help points (PHP), public address (PA), station announcement platforms (SAP) & CCTV camera power systems. The LSZH cables has been designed to provide superior flame retardance and circuit integrity if necessary, suitable for installation where fire, smoke emission and toxic fumes may create a potential threat.

STANDARDS

EME SP 14 027:LUL version of BS6724 for fire retardant version and BS6387 for fire resisting version
UNE 21123

VOLTAGE RATING

0.6/1KV

CABLE CONSTRUCTION

Conductors: Stranded plain copper conductors to IEC 60228 class 2 or 5.

Insulation: XLPE Insulation.

Bedding: LSZH bedding

Armoured: SWA

Outer sheath: LSZH Sheath

PHYSICAL AND THERMAL PROPERTIES

Minimum Bending Radius: 8 x OD

Operating Temperatures: 0°C to +90°C (during operation); 0°C to +70°C (during installation)

DIMENSION AND PARAMETERS

No. of Cores × Cross-sectional Area	No./Nominal Diameter of Strands	Nominal Sheath Thickness	Nom. Overall Diameter	Approx. Weight	Max. DC Resistance at 20°C
No.×mm ²	no./mm	mm	mm	kg/km	Ω/km
2 x 4	7/0.85	1.4	13.3	387	4.61



Caledonian

Railway Cables

www.caledonian-cables.com

marketing@caledonian-cables.com



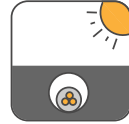
Highly Flexible



Impact Resistant



Insulation
Integrity FE180



Laid In Ducts



Oil Resistant



Water Resistant